

**Product Name:** Silicone Nipple Correctors  
**Materials:** Correctors - Food-Grade Silicone  
 Storage Case - PP  
**Dimensions:** 2 x Silicone Nipple Correctors - 65 x 65 x 44mm  
 1 x PP Storage Case - 136 x 83 x 55mm  
**Inner Diameter:** 22mm

### Product Description:

If you're struggling with breastfeeding due to flat, short or inverted nipples, Haakaa's Silicone Nipple Correctors are just the solution! Made from 100% food-grade silicone, these correctors are designed to gently draw out your nipple using natural, adjustable suction. Each corrector features a soft flange and extended internal space, accommodating most breast shapes and sizes while remaining comfortable. Lightweight for quick and easy use wherever you are, this set contains two nipple correctors and a handy storage case, letting you help your baby latch more easily anytime, anywhere.

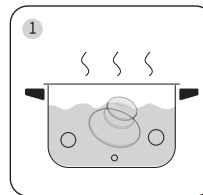
### Features:

- Utilises natural suction to gently draw out flat, short or inverted nipples to prepare for breastfeeding.
- Simple to use – press then place over the nipple prior to breastfeeding.
- Effective one-handed operation for easy, pain-free suction adjustment.
- 22mm extended inner diameter provides extra space to accommodate most breast shapes and sizes.
- Dual spiral design around the dome allows for easy gripping.
- Flexible food-grade silicone is safe and skin-friendly.
- Ultra-soft, thin silicone flange helps create a vacuum chamber while protecting your areola and breast skin.
- Clear chamber to easily keep track of your nipple's positioning.
- Lightweight and compact to fit discreetly in your bra.
- Safe in microwaves, boiling water and sterilisers.
- Includes one pair of nipple correctors and a storage case.
- BPA, PVC and phthalate-free.

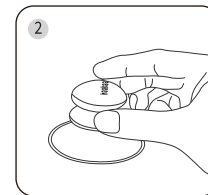
### Cleaning and Care:

Before first use, clean correctors in warm soapy water then boil in water for five minutes to sterilise. Do not boil or steam sterilise the storage case. Wash before and after each use. Although dishwasher safe, we recommend hand washing in warm soapy water and rinsing and drying thoroughly. To sterilise the correctors, use a steam steriliser or boil in water for 2-3 minutes. Other common methods of cleaning, storage and use not listed in this manual may damage the product. Please do not use bleach-based cleaners or tablets to clean this product. Only soft bristle brushes or soft sponges should be used to clean this product. Store product in a cool, dry place and avoid direct sunlight.

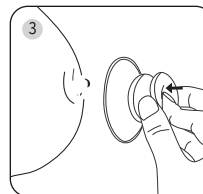
### Instructions:



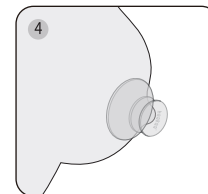
Before use, sterilise the corrector in boiling water and ensure your hands & breasts are clean and dry.



Pinch the spiral area of the corrector with your fingers for better grip and suction.



Press the dome of the corrector. Centre and place over your nipple.



Release your grip and repeat as required. Always remove corrector before feeding your baby.

**NOTE:** Use your correctors for only a few minutes before breastfeeding. Suction strength can be varied by adjusting pressure when pinching the dome.

### Caution:

- Nipple correctors **MUST** be removed from the nipple before your baby latches to feed. Results are not permanent and need to be repeated before each feed.
- For adult use only.
- Never use the nipple correctors as a soother/pacifier.
- Check product condition regularly. Replace if this product shows any signs of damage.
- Do not store near any sharp objects.
- This product is not a toy. Do not use this product for anything other than its intended use.
- If problems or pain occur, consult your lactation consultant or physician.
- Keep out of reach of children and pets.

**PLEASE NOTE:** This product is designed to help mothers gently draw out their nipples for breastfeeding. It is for use in the interim and only on the advice of a lactation consultant. Make sure the nipple corrector is the proper fit.